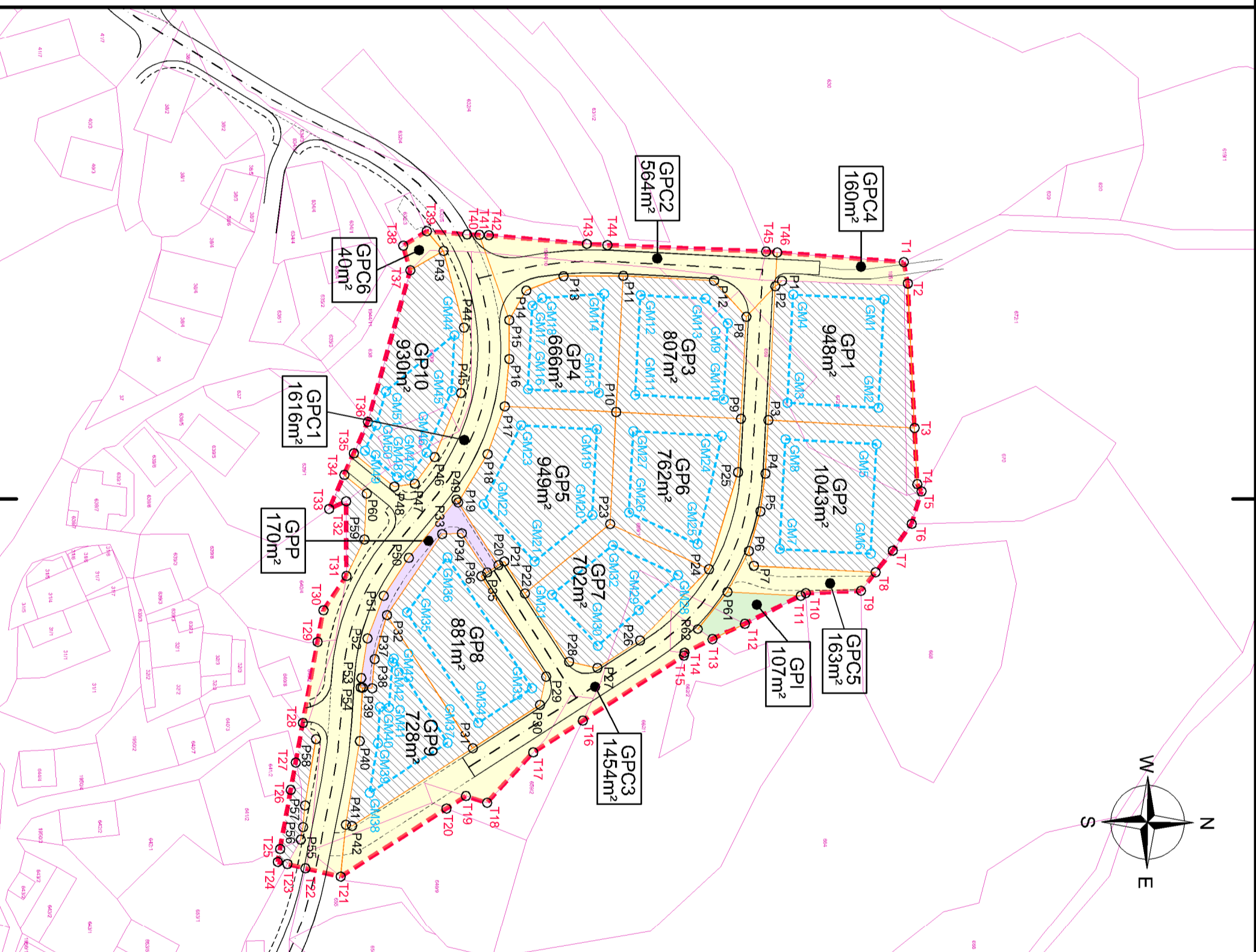


Zakoličbene točke meje OPPN (Tx), gradbenih mej (GMx) ter parcel (Px)

T	X_koor	Y_koor
T1	412904.91	108944.44
T2	412909.5861	108945.3534
T3	412941.3595	108946.8433
T4	412953.7	108947.42
T5	412955.29	108948.35
T6	412962.43	108946.2
T7	412968.3	108942.05
T8	412973.0496	108938.2741
T9	412977.08	108935.06
T10	412977.63	108922.95
T11	412978.1861	108921.838
T12	412984.35	108909.58
T13	412987.8255	108907.4789
T14	412990.83	108896.34
T15	412991.4397	108896.1899
T16	413005.6783	108874.039
T17	413072.62	108863.15
T18	413023.67	108853.01
T19	413022.1884	108846.3542
T20	413024.9134	108844.115
T21	413030.8377	108820.9049
T22	413038.0142	108813.7776
T23	413037.06	108809.21
T24	413036.5887	108807.1077
T25	413033.793	108807.6163
T26	41304.8666	108809.9632
T27	41304.8666	108811.0431
T28	413006.738	108872.6187
T29	412988.4329	108815.8335
T30	412981.3735	108817.127
T31	412973.85	108822.18
T32	412959.15	108818.35
T33	412957.46	108822.1
T34	412951.6769	108821.6863
T35	412946.9402	108823.7982
T36	412940.06	108826.87
T37	412906.66	108836.19
T38	412901.31	108834.63
T39	412898.13	108839.8
T40	412898.85	108848.64
T41	412898.9466	108851.3553
T42	412899.02	108853.42
T43	412900.93	108874.917
T44	412901.17	108879.42
T45	412902.59	108894.26
T46	412902.7783	108916.6834

T	X_koor	Y_koor
GM1	412913.0553	108940.1778
GM2	412936.9334	108938.9177
GM3	412935.8733	108918.9334
GM4	412912.0064	108920.1955
GM5	412944.9215	108938.4815
GM6	412968.9872	108937.2049
GM7	412967.9278	108917.2329
GM8	412943.8621	108918.5096
GM9	412918.3122	108905.8453
GM10	412935.1317	108904.953
GM11	412934.102	108885.544
GM12	412912.1264	108886.7098
GM13	412912.8887	108900.9682
GM14	412911.8323	108878.7142
GM15	412933.8844	108877.5549
GM16	412932.8827	108861.9897
GM17	412914.4826	108862.9658
GM18	412912.7676	108865.1427
GM19	412941.6732	108877.1311
GM20	412960.4699	108876.134
GM21	412970.6819	108863.4577
GM22	412958.0955	108852.2634
GM23	412940.8149	108860.4659
GM24	412943.1204	108904.5293
GM25	412966.8347	108899.2067
GM26	412959.95	108884.1728
GM27	412942.0908	108885.1202
GM28	412973.6754	108894.9305
GM29	412981.3365	108886.3167
GM30	412989.3114	108877.35
GM31	412977.9818	108867.2736
GM32	412967.1259	108880.6287
GM33	412988.6199	108862.8776
GM34	413006.1878	108851.0994
GM35	412981.8568	108835.4658
GM36	412969.7779	108844.3455
GM37	413010.5124	108844.369
GM38	413021.5017	108827.266
GM39	413010.5967	108829.0889
GM40	413002.7057	108829.5081
GM41	413002.8235	108831.4931
GM42	412992.9177	108832.3097
GM43	412992.098	108837.537
GM44	412920.9518	108845.8843
GM45	412933.2739	108845.2808
GM46	412946.7755	108839.745
GM47	412951.7795	108836.0388
GM48	412952.1423	108833.2747
GM49	412946.3643	108826.2747
GM50	412940.7367	108828.7581
GM51	412933.327	108830.8438

T	X_koor	Y_koor
P1	412909.002	108917.741
P2	412910.1922	108916.2998
P3	412939.6598	108914.7271
P4	412951.4082	108914.1037
P5	412957.6906	108914.171
P6	412968.3869	108910.4878
P7	412971.6326	108911.5636
P8	412916.8695	108909.9274
P9	412939.3379	108908.7355
P10	412937.8845	108881.3377
P11	412907.9185	108882.9274
P12	412908.9828	108902.8353
P13	412907.9861	108869.7918
P14	412911.1239	108861.622
P15	412917.587	108851.9129
P16	412926.2592	108857.8944
P17	412936.6261	108856.9034
P18	412947.1562	108853.1404
P19	412957.712	108846.6961
P20	412971.4733	108855.5382
P21	412970.6624	108855.8002
P22	412977.6768	108861.3072
P23	412962.4543	108880.0344
P24	412972.3835	108901.7166
P25	412951.0903	108908.1121
P26	412984.1477	108896.5847
P27	412994.1469	108877.2387
P28	412992.7936	108871.0203
P29	412996.037	108865.9725
P30	413002.2554	108846.6192
P31	413011.7153	108849.8964
P32	412982.4165	108831.0708
P33	412964.6366	108843.1605
P34	412969.7779	108844.3455
P35	412973.095	108853.0143
P36	412973.9058	108851.7524
P37	412992.127	108826.3542
P38	412998.599	108827.8278
P39	412998.4744	108825.7273
P40	413010.1588	108829.1065
P41	413028.4933	108822.0419
P42	413028.7297	108823.4164
P43	412902.46	108843.45
P44	412919.2351	108847.9708
P45	412933.7149	108847.2616
P46	412947.7652	108841.5007
P47	412953.6199	108837.1642
P48	412954.2393	108832.6761
P49	412957.0946	108846.2994
P50	412969.8739	108835.8743
P51	412976.2197	108830.3626
P52	412987.6921	108826.7908
P53	412996.3635	108825.4377
P54	412998.4499	108825.3339
P55	413021.74	108817.12
P56	413028.98	108812.64
P57	413024.2329	108813.0847
P58	413009.7326	108819.4886
P59	412965.8504	108826.1018
P60	412955.751	108826.6418
P62	412985.5545	108899.2509



LEGENDA:

- območje OPPN (velikost območja ca. 1,26 hektara)
- parcela namenjena gradnji
- gradbena meja (GM)
- javne prometnice
- parcela namenjena gradnji s površino (GP1 do GP10)
- parcela namenjena gradnji ceste - javna površina (GPC1 do GPC6)
- parcela namenjena gradnji pešpoti - javna površina
- parcela namenjena gradnji TP in EO

savaprojekt
Krško
 družba za razvoj,
 projektiranje,
 konzalting, inženiring d.d.
 Cesta krških zriev 59
 8270 Krško
 Slovenija

narodnik in pripravilec:
 Občina Tolmin,
 Ulica padlih borcev 2,
 5220 Tolmin

inve:	Damjana Pirc, u.d.l.l.k.a.	id št.:	KA-1562	objekt:	OBČINSKI PODROBNI PROSTORSKI NAČRT Stanovanjska zazidava Šenčvska Gora (ŠG 01)
izdelal:	Silvija Urnek, d.l.g.			faza:	usklepen predlog
	Tajdana Zupančič, gt.			načrt:	Načrt parcelacije
št. proj.:	15 218 - 00	datum:	sept. 2017	meno:	1:1000
					št. graf. načrt: B6